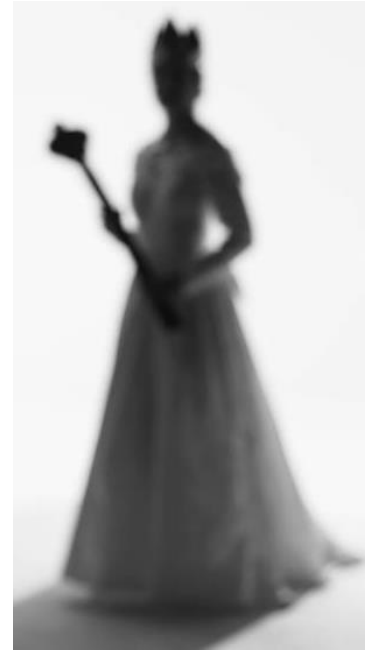


Changing prose into a play script

This is an extract from *The Lion, The Witch and the Wardrobe*. The children have just gone back to visit Mr Tumnus to find that he has been arrested and taken to the White Witch.

- Read the passage.
- Change the text into a play script adding stage directions and any extra dialogue that you wish.
- Step 1 – Highlight the spoken parts
- Step 2 – Identify & highlight stage directions
- Step 3 – High light the setting of the scene



The children stared at each other.

‘I don’t know that I am going to like this place after all,’ said Susan.




‘Who is this Queen Lu?’ said Peter. ‘Do you know anything about her?’

‘She isn’t a real Queen at all,’ answered Lucy, ‘she’s a horrible Witch, the White Witch. Everyone - all the wood people - hate her. She has made an enchantment all over the whole country so that it is always winter here and never Christmas.’

‘I- I wonder if there’s any point in going on,’ said Susan. ‘I mean it doesn’t seem particularly safe here and it looks as if it won’t be much fun either and it is getting colder every minute. And we’ve brought nothing to eat. What about just going home?’

‘Oh but we can’t, we can’t,’ said Lucy suddenly. ‘Don’t you see? We can’t just go home, not after this. It is all on my account that the poor Fawn has got into this trouble. He hid me from the Witch and showed me the way back...’

Changing prose into a play script

		<u>I used it!</u>
1	I have introduced and described the scene	
2	Characters' names are written on the left	
3	Characters' names have a colon after them	
4	I have started a new line for every new speaker.	
5	My stage directions are in brackets ()	
6	My stage directions are written in the present tense	
7	I have stage directions for how the actors  must speak 	
8	I have stage directions for how the  actors must move 	
9	There are NO speech marks	